



M25

junction 10/A3 Wisley interchange

Welcome to our latest update

Our improvements are well underway.

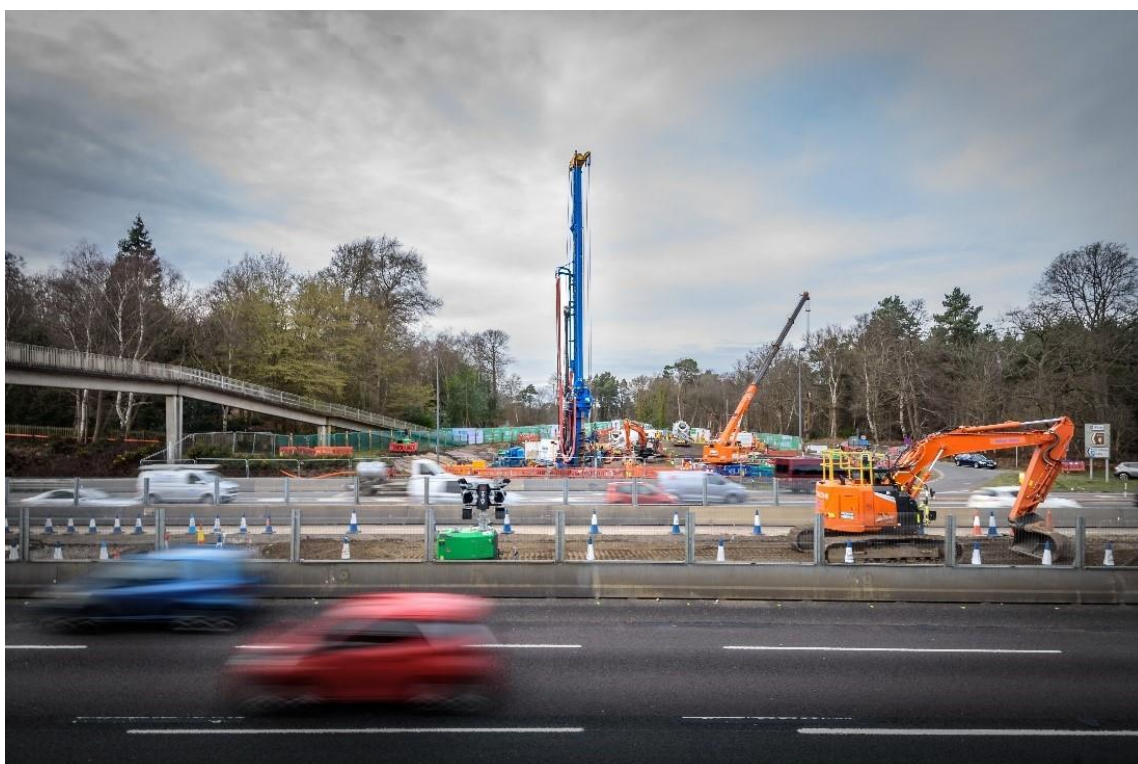
We've already removed lighting columns and metal barriers in the central reservation on the A3 to make room for building the extra lanes as part of our scheme. This widening work will help ease congestion and improve the flow of traffic.



Construction is well underway along the A3 near junction 10.

The A3 will increase from three to four lanes in both directions from the M25 junction to Ockham and Painshill Roundabouts, although the number of lanes won't change as it crosses over the roundabout.

New bridges



Foundation work is underway for the new Wisley Lane link bridge.

Our scheme will see not one, not two, but eight new bridges, including the UK's first ever heathland bridge.

Foundation work has already started on the new Wisley Lane link bridge. Wisley Lane will no longer join directly onto the busy A3 and will massively improve safety at the junction.

For more information about our project and new bridges, please visit our [online information portal](#).

Heathland restoration – your questions answered

If you've passed through our work recently, you will have noticed a significant amount of tree clearance. Although this might seem shocking at first, this is a natural part of resorting the ancient heathland that was once part of this landscape.



The scheme will involve some of the most extensive environmental mitigation ever carried out by National Highways. After one year grass and wildflowers start to grow.

To restore and bring it back to life, we need to clear areas of plantation woodland, which will allow the heathland to regenerate – but the restoration process can take several years.

You can read more detail in our factsheets:

- [Heathland restoration and woodland management](#) – how we replace lost habitats and our regeneration timeline
- [Tree and vegetation removal](#) - your questions answered

“Sett”-ling in...

We care about the impact our scheme has on the natural environment and do everything we can to protect it by providing enhanced habitats for some of our more vulnerable species.

Sometimes we have to encourage animals like badgers and bats to find new homes that are safe and away from where we are working. We have some good news – a replacement sett we built has been occupied!



A family of badgers have moved into their new home.

We've been monitoring our stripey-nosed friends very closely and our hidden cameras show a family of badgers are using the artificial sett.

As badgers are nocturnal and quite weary of humans, we don't know how many exactly have re-located, but we do know they have and are settling in rather nicely.

Learn more in our [Habitat Factsheet](#)

Narrow lanes and reduced speeds



To keep traffic moving, we've installed narrow lanes and a reduced speed limit on the A3, M25 and junction slip roads. This means we can keep the same number of lanes open as our project gets underway.

Even when it's quiet, it's important to stick to the safe speed limit and give other drivers plenty of room. Not everyone will be used to driving in this changed environment. There will be some delays, especially at peak times, so leave extra time for your journey if you can.

For more road safety advice, [visit our website](#).

Know the zones



Did you know...? Larger vehicles, like trucks and HGVs, have zones of limited visibility. If you linger around them, you may be driving in one and not even realise.

Junction 10 is the busiest on the M25 with hundreds of lorries travelling between London, Heathrow, Gatwick and the coast every day. Remember to take care when driving around HGVs and larger vehicles, especially through our narrow lanes and speed restrictions.

[Test your knowledge and find out more](#)

Keeping you informed

You can find out more about our plans and keep up to date with the project on our website www.nationalhighways.co.uk/m25j10.

If you have any questions, please email M25j10@nationalhighways.co.uk or call our Customer Contact Centre on 0300 123 5000.